



OMIS



OMIS is designed to support academic administration processes such as travel, hospitality, purchase order requisition, annual leave, staff utilisation, part time contracts, printing requisition, etc. at a department or school level by adding a layer on top of existing systems (finance [QLX], student records [Universe], timetabling [CMIS]) to utilise the data from these databases. The system is used to manage this information (ie. requests, claims, auto-generated transactions), authorise requests (supported by budget and resource information) and generate reports at strategic management levels (ie. resource manager, subject leader/manager, associate dean and dean). OMIS is scalable and can be deployed as a university wide application.

INTERNET APPLICATION

OMIS utilises a database management system application developed by KAJ ISIS LIMITED called e@syMIS which provides the online functionality.



SYSTEM REQUIREMENTS

The system utilises internet technologies that fall into the client-server category (processing is carried out on a server and the information is delivered to the client PC across a network and viewed through an industry standard browser). Connectivity between server and client PC is provided by an intranet (campus network) and is extended to internet through an extranet connection to facilitate remote access.

The system specification is as follows:

Hardware	Medium Quality Business Server <ul style="list-style-type: none"> o Intel® Pentium 4 processor with 1MB L2 Cache o 1GB SDRAM (Upgradeable to 4GB Memory) o Storage expandable up to 1200GB o ... Firewall
Software	<ul style="list-style-type: none"> o Microsoft Windows 2K3 Server Software o IIS 7.00 o AJAX Libraries o dotNet Framework 2.00+ o Microsoft SQL Server 2008 o Standard Utility Programs (various depending on required functionality) o Antivirus software o Remote Desktop Connection (RDC)

OMIS runs on a Microsoft Windows Server operating sytem platform and can access data from a range of database file formats that include: SQL Server, MS FoxPro, MS Access and Oracle. It is designed to offer the user a range of data export file formats that include those mentioned and MS EXCEL and csv.

USER REQUIREMENTS

The user requirements are minimal and requires a system specification that includes:

Hardware	PC (low end) <ul style="list-style-type: none"> ▪ 1 Gb RAM ▪ 1 Gb HD ▪ ...
Software	<ul style="list-style-type: none"> ❖ Windows XP (or Above) PC ❖ Safari (Mac) ❖ Industry Standard Browser: Netscape 5+, MS IE 5+, FireFox ❖ ...

As the processing is carried out on the server the resources at the client end are small and hence the low standard performance requirement. The software is compliant with single 'A' W3C accessibility standards and incorporates code that will accommodate several disability devices.

SYSTEM FUNCTIONALITY

Staff version:



budget - establish budget limits, compare proposed budget v expenditure and generate management reports



module efficiency - derive module efficiency and income generated. Also included are performance modelling facilities



hospitality – request, authorise and maintain hospitality requests



annual leave - request annual leave, authorise and maintain requests. Also monitor entitlement.



staff utilisation – captures academic scheduled hours and all additional hours to indicate utilisation of resources and residual hours



travel – request event attendance, authorise requests, submit and authoris expense claim forms



messages – administer and access messages relating to courses, class postponements and general school information by specific account



subject group viewer - subject group heads can view details of lecturer hours, part time claims, modules hours and annual leave days. The reports are filtered by subject groups



week directory - university academic week directory indicating induction, reading, teaching and exam weeks



lecturer directory - lecturer contact details including room number, direct dial, email and surgery access times for students



admin directory - contact details including room number, direct dial and email



room requests - find out what rooms are available and make a request for identified room(s) online



lecturer enquiries - find out where a lecturer is teaching and available. Also included is the lecturer contact information



room enquiries - find out what classes are running in which rooms for a specific day, time and week; also if a room is available



module enquiries - find out what module classes are running on a specific day, time and week. Also find out who is lecturing



course enquiries - find out what modules are running on a specific day, time and week. Also find out who is lecturing

Student version:



messages – access messages relating to courses, class postponements and general school information by specific account



module – select module preferences



week directory - university academic week directory indicating induction, reading, teaching and exam weeks



lecturer directory - lecturer contact details including room number, direct dial, email and surgery access times for students



admin directory - contact details including room number, direct dial and email



room requests - find out what rooms are available and make a request for identified room(s) online



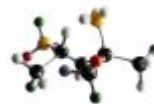
lecturer enquiries - find out where a lecturer is teaching and available. Also included is the lecturer contact information



room enquiries - find out what classes are running in which rooms for a specific day, time and week; also if a room is available



module enquiries - find out what module classes are running on a specific day, time and week. Also find out who is lecturing



course enquiries - find out what modules are running on a specific day, time and week. Also find out who is lecturing

WORK IN PROGRESS

The current work in progress includes:

- upgrade information boards – messaging
- core structure being rewritten for dotNet Framework 2.00/3.00

- SMS Text messaging alerts
- Location Independent Working (LIW) Touch Down Room Booking
- new subject group/area structure
- new management reports
- traffic light system prioritisation of task in user account home page
- user configurable home page

SCOPE

OMIS is a scalable application that can be deployed university wide. It can be configured to accommodate additional schools/departments and the account structure can be quickly extended to include Pro Vice Chancellor and Vice Chancellor. In addition, OMIS is robust and stable application that has been operational for over six academic years with some elements operating successfully over a ten year period. The application is 'market ready' and is supported by a developed training programme that is supplemented with documented training materials that are in both conventional and electronic formats.

PRODUCT EVOLUTION

year	Development
2009	Extended staffing utilisation functions and reporting
2008	LIW room booking application integration
2007	Extensive Management reporting Extended account structure to accommodate Faculty restructuring
2006	Purchasing and Requisition – request, authorise and administration. Extensive management reporting and integration with Universe CMIS integration
2005	OMIS v1.8 – Module Management function and PT Contract on-costs added
2004	OMIS v1:00 launch – budget, annual leave and hospitality functions added
2003	SEMS v2.0 - increased functionality and accounting added
2002	SEMS v1.0 launch – staff event management system – travel request, authorisation and accounting
2001	Enquiry Online v4.0 - Lecturer part time online contracts/claims
2000	Enquiry Online v3.0 – further integration with Timetable Manager Information Board v1.0 launch – configurable screens and increased functionality
1999	Enquiry Online v2.0 - staff and student versions of online timetable with increased functionality. Message Board v1.2 - increased functionality and integration with Timetable Manager
1998	Timetable Manager v3.8 and Timetable Enquiry v1.8 (staff/student version) – increased functionality included generation of part time claims. Launch of Enquiry Online v1:0 staff and student versions of online timetable Message Board v1.0 launch – information boards in CBS buildings
1997	Timetable Manager v3.8 and Timetable Enquiry v1.8 (staff/student version) – increased functionality included generation of part time contracts
1996	Timetable Manager v3.7 and Timetable Enquiry v1.7 (staff version)
1995	Timetable Manager v3.6 – networked version written for MS Windows 9X with increased resource management functionality
1994	Timetable Manager v3.00 – networked version written for MS Windows 2.0. with improved interface, increased resource management features and improved reporting facilities
1993	Timetable Manager v2:00 – standalone PC, MS FoxPro, Dos – improved reporting facilities with clash checking and reporting
1992	Timetable Manager v1.0 launch – Standalone PC Dbase 4 application, Dos version, Generates course, module, lecturer timetables and reports

CONTACT DETAILS

contact name:	Keith Jones
title:	Managing Director
company name:	KAJ ISIS LIMITED
company address:	TechnoCentre
town:	Coventry
county:	West Midlands
post code:	CV1 2TT
telephone:	024 7623 6277
fax:	024 7664 0716
email:	technical@kaj-isis.co.uk
url:	www.kaj-isis.com

ends.